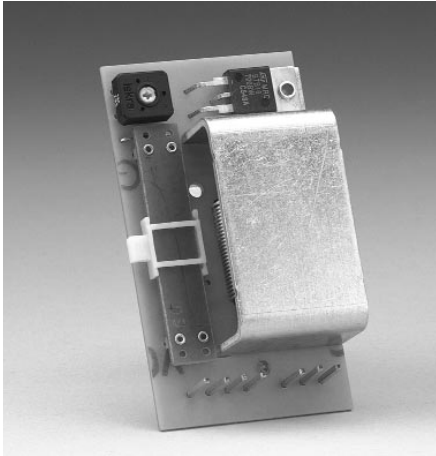


## Vacuum Speed Control



### Design Features

- Phase control of standard vacuum cleaner
- On board suppression
- PCB design for on board or remote slider / rotary potentiometers
- Twin speed switching
- 1600 W maximum load (certain applications may require air venting)
- Designed to meet all CE directives

Invensys Appliance Controls' new line of vacuum speed controls continues the tradition of application innovation established with their first product.

The wireless control offers the user electronic analogue phase control of a.c. brush motor with on board suppression. The control is individually calibrated for minimum wattage.

The new control is designed to comply with all CE directives.

### Advantages

- Standardized component footprint minimizes tooling costs
- Automated assembly and testing
- Modular design
- Bag full indication
- Mains switching and power level indication

### Specifications

- Voltage range 110V to 240V, 50-60 Hz
- Dimensions 75 mm x 40 mm x 20 mm high
- Operating temperature 75° C (167° F)
- PPM levels <100