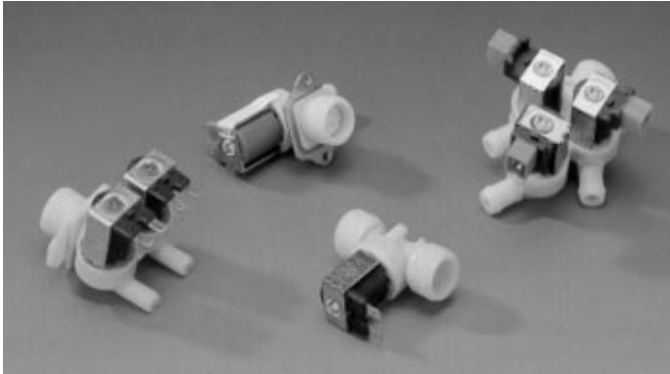




Appliance Controls

V Series Water Valves



Invensys Appliance Controls manufactures a wide range of diaphragm operated solenoid valves especially developed for appliances such as clothes and dish-washers and other domestic or industrial applications.

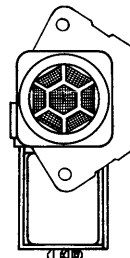
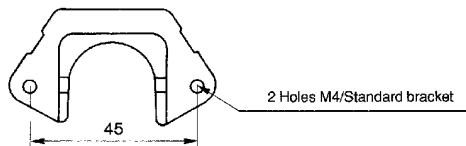
Invensys Appliance Controls is capable of meeting a customers global requirements anywhere with an extensive line of normally closed valves. The single, double and triple outlet valves operate under a wide range of inlet pressures and with a constant predetermined flow rate.

Installation:

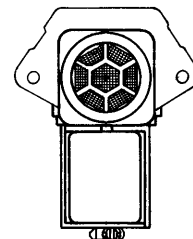
V Series Valves may be supplied with a metal standard bracket which is mounted on the valve body.

Others may be available upon request.

The bracket may be orientated on the valve body in the vertical or horizontal position according to customer requirements as shown below.

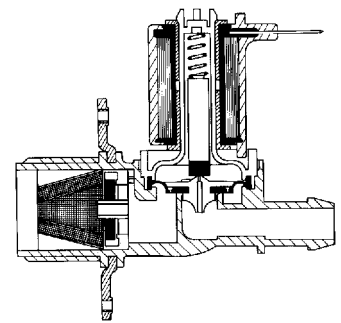
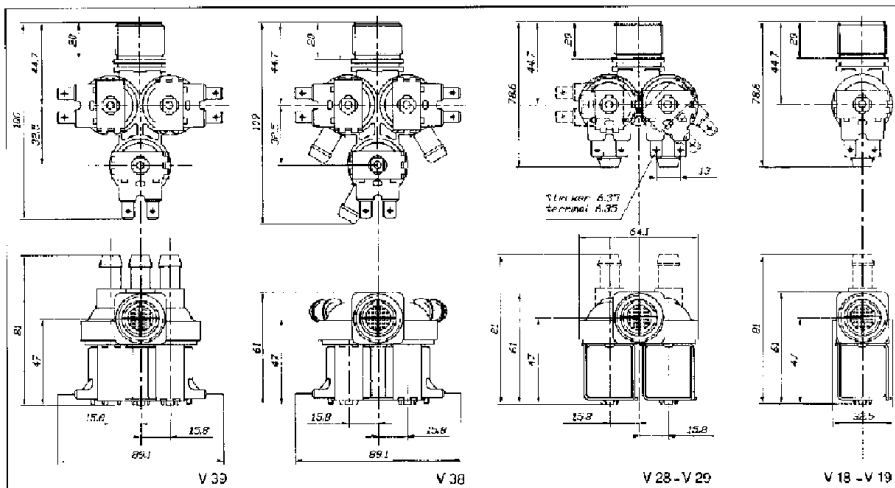


bracket in the vertical mounting position



bracket in the horizontal mounting position.

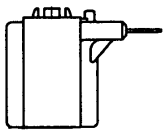
Invensys Appliance Controls Valves operate in any orientation to suit available space.



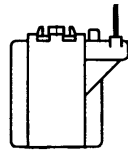
Section drawing of a diaphragm operated water valve

Electrical Connection

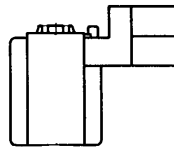
Coils: Three versions of terminals are available.



Type with horizontal
(standard version)
tab terminals
type 6,3 x 0,8
EN 60 730-1



Type with vertical
tab terminal
type 6,3 x 0,8
EN 60 730-1



Type with connectorized
(Rast 5) terminals

Power draw:
6 Watts per coil at 230 V~

Insulation: Class F

Voltage Ratings available:

12 V AC, 50/60 Hz
12 V DC
24 V AC, 50/60 Hz
24 V DC
110/120 V AC, 50/60 Hz
220/240 V AC, 50.60 Hz

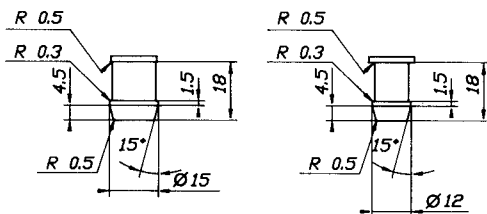
Ordering Information - Please give the following information:

- Valve type: V 18, V 19, V 28, V 29, V 38 or V 39
- Flow rate in liters per minute
- Outlet tube diameter (15 or 12 mm)
- Coil Voltage & terminal orientation
- Mounting bracket orientation (vertical or horizontal)
- Drawings for specific applications

Hydraulic Connection

Inlet: G3/4" B NF E 03 005 (3/4" BSP)

Outlet: Two different standard configurations as shown below.



hose connectors DIN 44987

Other custom design configurations are available on request.

Water Hammer: According to VDE 730-2Zb and EN 50084

Operating inlet pressure range: 0,2 to 10 bar

Filter: Valves are supplied with a plastic inlet filter to prevent particles entering the valve.

Flow regulator:

A flow control fitted in the inlet ensures a constant flow rate over the inlet pressure range of 1 to 10 bar.

The device is composed of studs on which lay a rubber washer.

The flow rate is controlled by the area between the studs and the form of the rubber washer.

The form changes depending on the inlet pressure, so regulating the flow.

