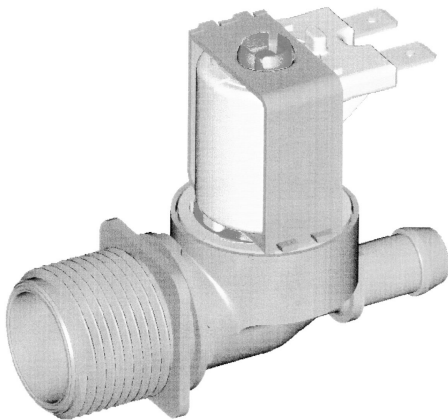




Appliance Controls

V18 Series Solenoid Valve



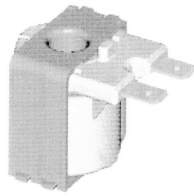
The V18 Series are part of an extensive line of pilot operated solenoid valves for use in clothes washers, dishwashers, showers, air conditioning systems and other domestic or commercial applications.

Fully flexible and designed and produced to meet the stringent requirements of the markets of today and the future.

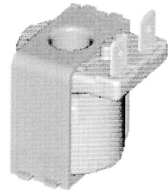
Design Features

- Rated Voltage: 220-240 vac, 110-120 vac, 24 vac & 12 vac. Others upon request.
- Rated Frequency: 50-60 Hz
- Power Draw: 6 Watts (3 Watt DC servo-assisted - optional) at 230 vac
- Temperature: Ambient 60° C maximum
Liquid 90° C maximum
- Operating Cycle Rate:
Tu 25° C, Tm 90° C & Tu 60° C, Tm 25° C - Continuous (100% ED)
Tu 60° C, Tm 90° C - 3 minutes ON,
5 minutes OFF
- Operating Pressure Range: 0.2 to 10 bar
- Flow Regulator (Optional): 0.25 to 17 Liters/minute
- EMC: Fully compliant
- Approvals: Approved by all major approval agencies worldwide. EN 60 730-2-8, UL 429, CSA C22.2 etc.
- Insulation: Class II. Fully double insulated. No grounding required.
- Coil Insulation: Class F (140° C operating temperature)
- Terminals: Two 6.35 X 0.8 mm male tab terminals. RAST 5 and RAST 2.5 optional

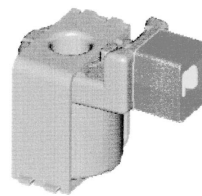
Coil Type



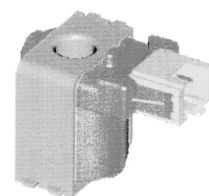
Standard



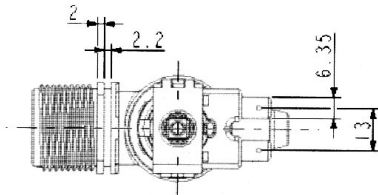
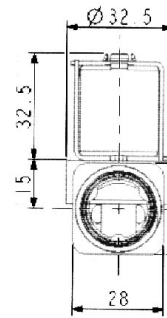
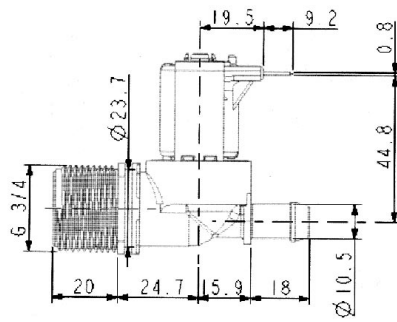
90°



RAST 5



RAST 2.5



Dimensions in millimetres