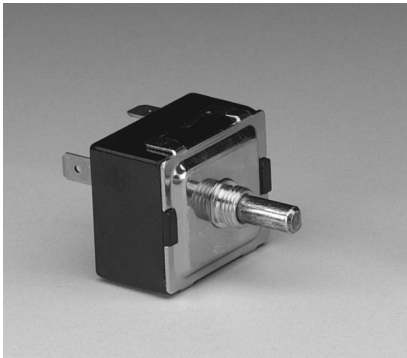




Appliance Controls

Selector Switch



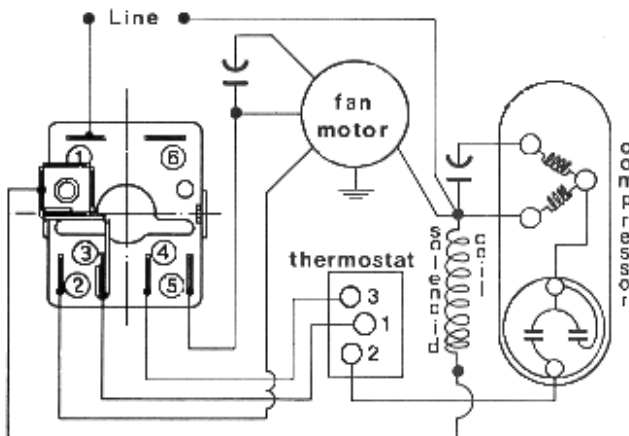
The Selector Switch is designed to control domestic and industrial electric equipment such as: air conditioners, stoves, automatic washers, fans, dishwashers, electric heaters, and hot plates.

The Selector Switch can be supplied with two to eight switching positions according to switching diagram (consult factory).

- Case and Cam parts are produced of high dielectrical strength phenolic
- Front cover is produced of zinc-plated steel and has a clamp type system
- UNF 3/8" - 2A threaded sleeve mounting
- Operating temperature limit: 125°C
- Arc-less terminals manufactured of brass

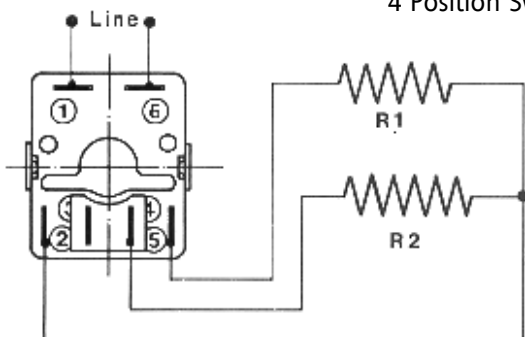
TYPICAL APPLICATIONS

7 Position Switch For Air Conditioning



terminal connection	1-2	1-3	1-4	1-5
position	high fan	solen.	compress.	low fan
1	●			
2				●
3	●		●	
4			●	●
5	●	●		
6		●		●
7				

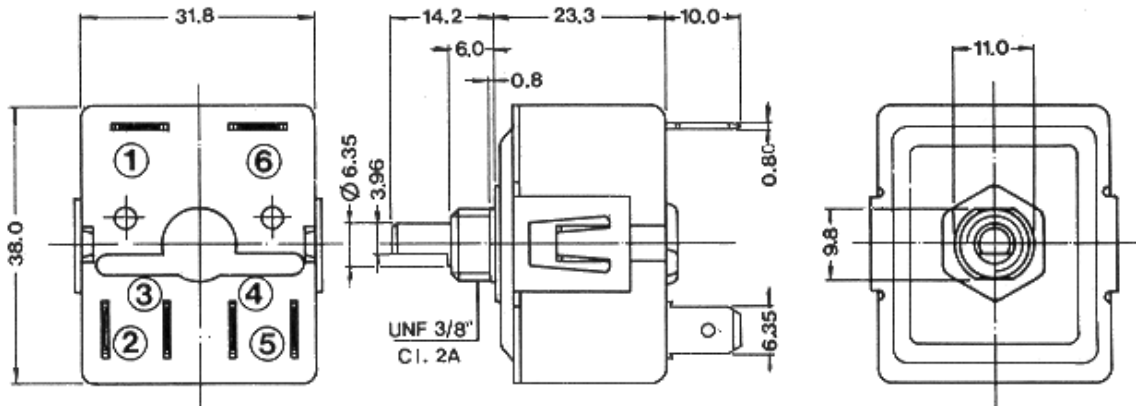
4 Position Switch For Electric Heaters



terminal connection	1-2	1-3	6-4	6-5
position				
1	●		●	●
2	●			●
3		●		●
4				

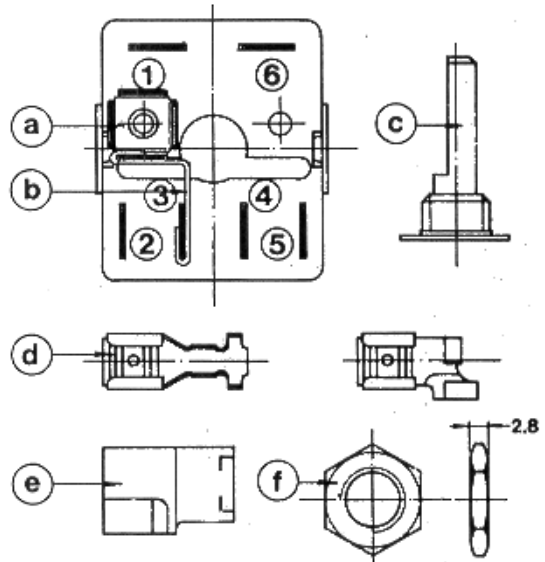
NOTE: n°3 and 4 terminals are externally connected.

Standard Dimensions



OPTIONS

- a **Dummy Terminal** - for auxiliary and external wiring.
- b **Connection Strap** - to connect n° 3 and dummy terminal.
- c **Shaft** - manufactured of steel or nylon, in different lengths.
- d **Arc-less Female Terminal** - straight or 90° angle.
- e **Terminal Insulator** - for insulating arc-less female terminals.
- f **UNF 3/8" - 2B Nut** - for switch mounting.



Electrical Ratings

Type	Application	Voltage (VAC)	Current (AMP)		Life Test Cycle
			Inductive	Resistive	
A	Heavy Duty	110/220	25	40	20,000
B	Light Duty	110/220	10	15	20,000

OBS.

Each terminal can be supplied with any one of the electrical ratings listed above.

NOTE:

- When ordering, specify electrical rating, options, switching diagram and application.
- Illustration and technical information can be altered without previous notice.