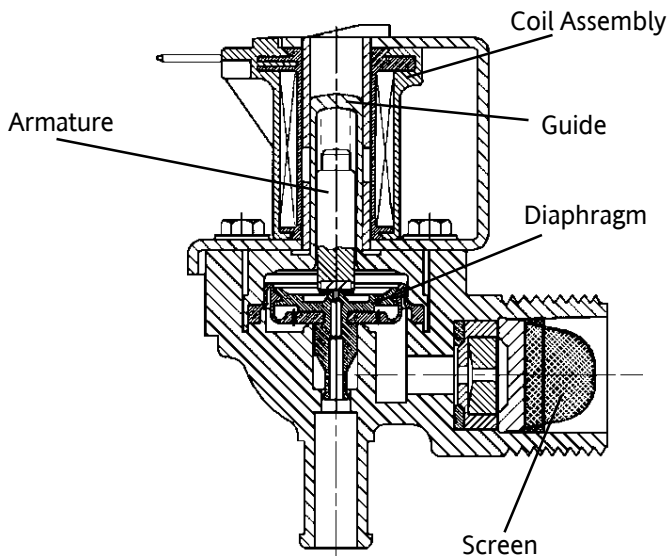


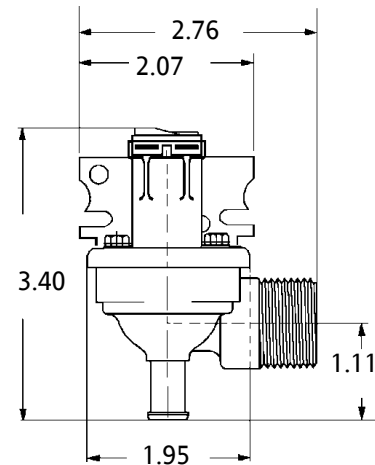
Model S-54 Solenoid Valves



Invensys offers three different voltages in the S-54 model series of general purpose water valves for energy-conserving plumbing and heating applications. Each valve has an encapsulated coil which provides high mechanical and di-electric strength, and is moisture resistant.

This model features a stabilized plastic body which can cope with a variety of adverse water conditions throughout the country.

These solenoid valves have a pilot-operated diaphragm that provides high flow capacity with minimum power requirements. Each valve has a strainer for the protection of both the valve and the appliance.



- Body Material: Polypropylene
- Connections: $\frac{3}{4}$ " - 11 NHT (Garden Hose) Inlet
 $\frac{3}{8}$ " ID Hose Outlet
- Flow Rate: Up to $8\frac{1}{2}$ GPM
- Max. Water Temp: 160°F
- Mounting: Bracket
- Operating Pressure: 20 PSI to 120 PSI
- Terminals: $\frac{1}{4}$ " Male
- Voltages: 24V, 120V and 240V