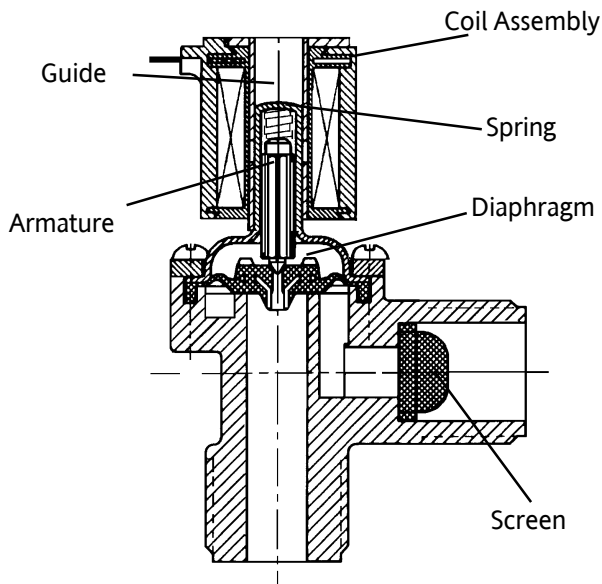
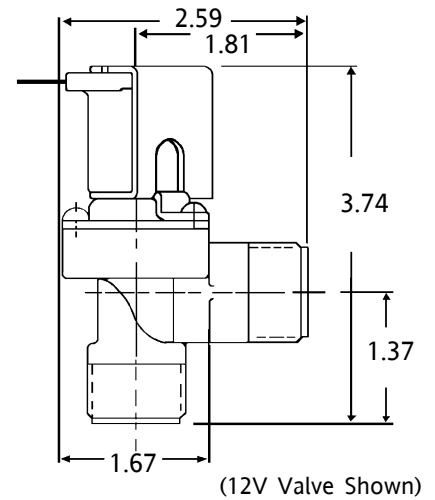


## Model S-51 Solenoid Valve



Invensys offers three different voltages in the S-51 model series of general purpose water valves for energy-conserving plumbing and heating applications. Each valve has an encapsulated coil to provide high mechanical and di-electric strength, and is moisture resistant.

The S-51 model was created for use typically as a cold water inlet valve for pressurized systems, and is especially suited for higher flow. Its pilot-operated diaphragm provides high-flow capacity with minimum power requirements.



The body material provides high resistance to corrosion and mineral deposits. Each valve has a strainer for the protection of both the valve and the appliance. The S-51 meets UL requirements for duty operation.

Body Material: Nylon  
Connections:  $\frac{3}{4}$ " - 14 MNPT Inlet and

Outlet

Flow Rate: Up to 35GPM  
Max. Water Temp.: 160°F  
Mounting: Direct  
Operating Pressure: 20PSI to 120PSI  
Terminals:  $\frac{1}{4}$ " Male  
Voltages: 24V, 120V and 240V