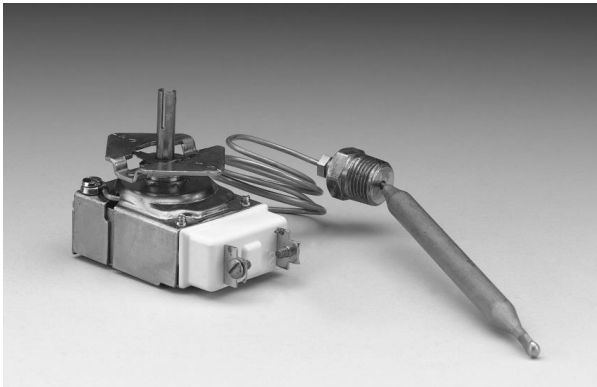




Appliance Controls

RX Millivolt Direct Current Electric Thermostat



The RX is a single pole thermostat that is designed especially for today's demanding millivolt/milliamp direct current applications.

The RX is designed with a hermetically sealed reed switch. This new feature provides durability and accuracy in the harshest environments.

Design Features

- Rated for .67 amps at 5 VDC
- Maximum ambient temperature 230°F (110°C)
- Precise and proven snap action mechanism
- Screw type terminals ensure electrical integrity
- Rugged steel case design
- Agency listings:
UL, CSA, IEC, AGA

Specifications

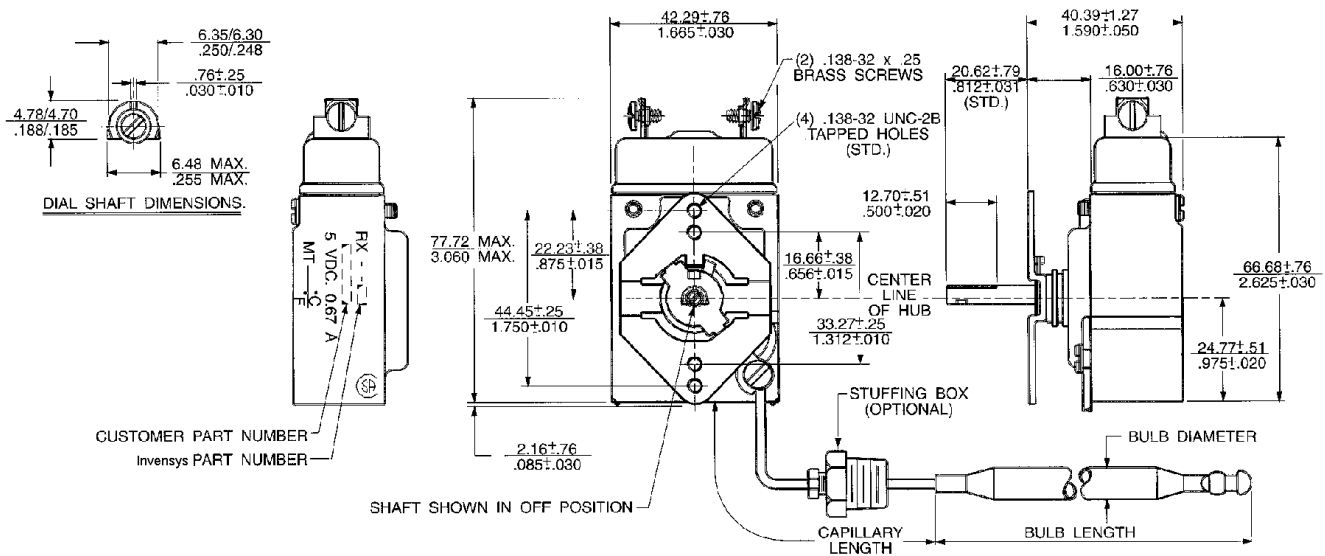
- SPST - Break on temperature rise
- Bulb and capillary assemblies supplied in nickel plated copper or stainless steel
- Capillary lengths of 24" to 120" in 12" increments
- Nickel plated brass stuffing boxes available (.250 NPT or .375 NPT), if required
- Flat of shaft is down in the OFF position unless otherwise specified
- Dials available, if required, in common temperature ranges

Model RXP - Model RX with positive off position

Model RXL - Model RX for limiting application to 650°F maximum

Advantages

- Millivolt/Milliamp control **produces** reliable low current/low voltage performance.
- Sealed contacts **provide** survival in the harshest environments.
- Robust design **leads to** increased reliability, durability, and reduced down time.



Dimensions Specified Millimeter
Inch

Available Bulb Diameters			
4.75	6.35	7.92	9.53
.187	.250	.312	.375

NOTE: Use of this control on alternating current (AC) will damage the switch.

Application Responsibility

Invensys Appliance Controls, as a supplier, will comply with those agreed to drawing requirements and specifications that define this product. Suitability for any application is the responsibility of the purchaser.