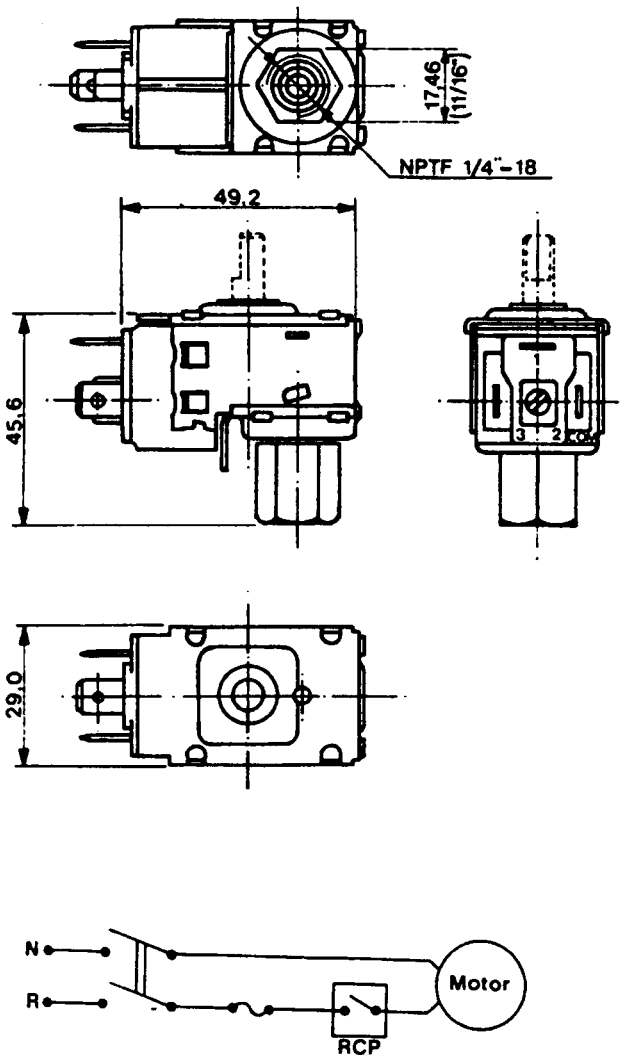


Model RCP Pressure Control



Specifications (RCP)

- 110/120 VAC 1HP
- 110 VAC 1/4 HP
- 25 AMP 96 LRA 120/240 VAC
- 1/4" NPTF - 18 female connector
- SPST (SPDT option for reverse cycle)

RCP Pressure Specifications

- Maximum pressure:
9.0 kg/cm² (130 PSI)
- Maximum working pressure:
7.0 kg/cm² (100 PSI)
- Differential - minimum:
0.2 kg/cm² (3 PSI)
- Differential - maximum:
2.8 kg/cm² (40 PSI)
- Pressure range for the adjustable model
(consult the manufacturer):
0.7 to 2.1 kg/cm² (10 to 30 PSI)
- Functioning pressure tolerance
(calibration position):
± 0.14 kg/cm² (2 PSI) maximum

Accessories

- Female terminal straight or angle
- Terminal insulator