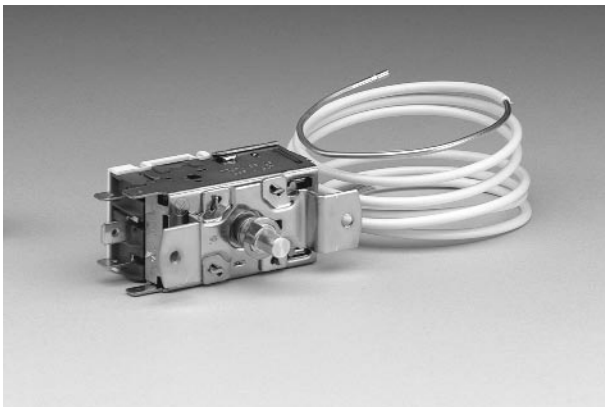


K Series Temperature Controls



The popular “K” Series cold control manufactured by Invensys Appliance Controls is available in 11 general configurations. The “K” is in use around the world on all types of refrigeration, freezer and air conditioning applications.

The “K” series, backed by our engineering expertise, provides manufacturers precise temperature control, no matter what the application. The control is certified by 14 approval agencies.

Design Features

- Full range of controls for refrigeration and air conditioning
- Proven vapor-filled sensor system
- Consistent operation
- Global Agency Approvals

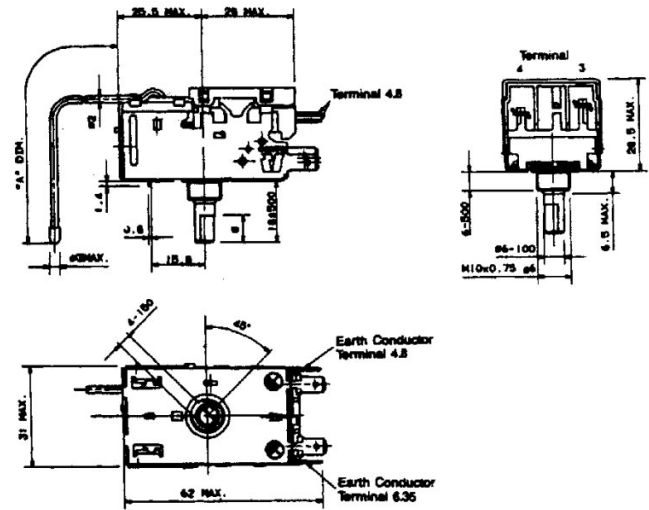
Electrical Specifications

- Terminals:
K50/K52/K54/K56/K57/K58/K59/K60/K61:
4.8 mm standard, 6.3 mm optional (2.8 mm on request)
K22/K55:
6.3 mm standard
- Earth conductor terminal:
4.8 mm and 6.3 mm
All terminals according to DIN 46244
- Operating temperature of control housing:
 $\pm 0^{\circ}\text{C}$ to $+55^{\circ}\text{C}$
- Storage temperature: -30°C to $+70^{\circ}\text{C}$

- Rating
(Rated current)
See respective “K” type sheet. The indications in general refer to a rated voltage of 250 V~50 Hz. Ratings for other voltages/direct current on request. Values without (..) non-inductive, in (..) inductive load.
- Tolerances:
Adjustment position OFF/ON $\pm 1.0\text{ K}$
each test position ON $\pm 1.5\text{ K}$ to $\pm 2.5\text{ K}$
depending on temperature range
Signal value $\pm 2.0\text{ K}$
Defrost value $\pm 2.0\text{ K}$
(The tolerances refer to normal adjustment ranges, in special cases they may change.)
Narrower tolerance values are in general possible on request.
- Reference Value: 736.6 mm Hg
- Capillary lengths (in mm):
400 +65; 600 +65; 900 +65
1200 +75; 1500 +75; 2000 +75;
2500 +95

	K22	K50	K52	K54	K55	K56	K57	K58	K59	K60	K61
Temperature control with changeover function	.										.
Temperature control with normal ON/OFF cycling function		
Temperature control with 2 sensor systems			.								
Signal switch				.		.		.			
Auxiliary Switch for OFF position					
Push-button for automatic temperature decrease								.			
Temperature control with constant cut-in temperature									.		.
Push-button for automatic defrost										.	

	K22	K50	K52	K54	K55	K56	K57	K58	K59	K60	K61
VDE*
Kema		
Demko	
Semko	
FEI						
Nemko	
SEV	
Beab	
UL	
CSA	
ÖVE	
Australia	
Atrem	
Lcie (UTE)	



*Test class II, increased tracking resistance; min. temperature change rate 1 K/min.