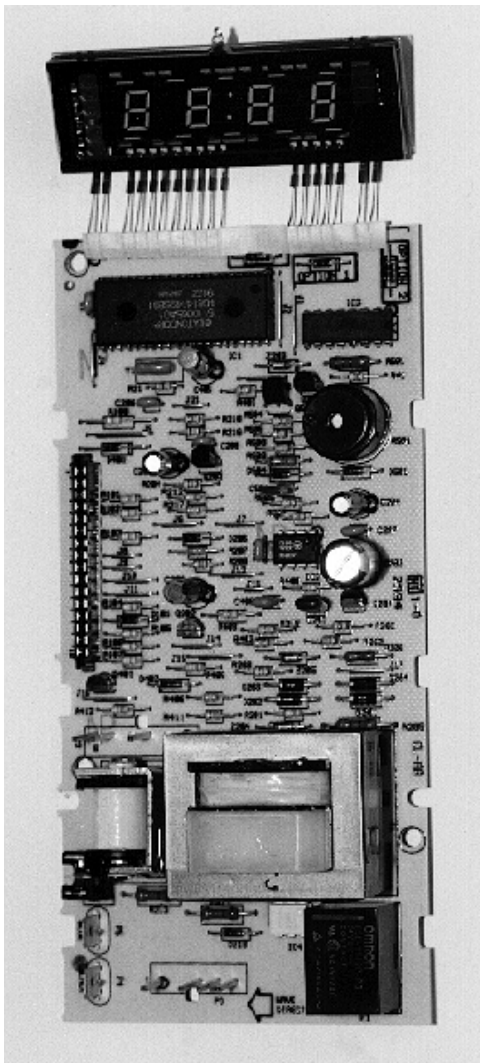


## Electronic Microwave Oven Control



The Electronic Microwave Oven Control is an electronic system for completely controlling microwave oven operations. The unit provides timing and power setting for cooking.

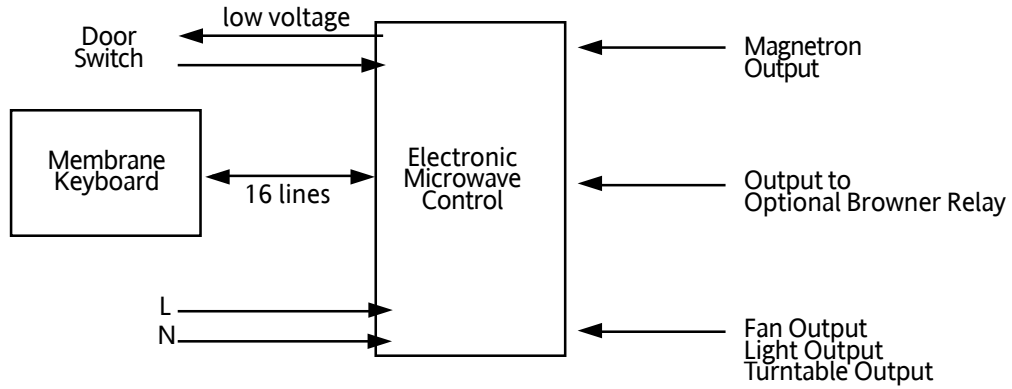
### Features

- Time of day
- Minute minder
- Two microwave cooking stages, plus cook and hold
- Speed defrost
- Ten power settings
- Vacuum fluorescent display
- Fan, light, and turntable control
- Closed loop magnetron relay control
- Browner relay drive circuit
- Audible indicators
- UL approved

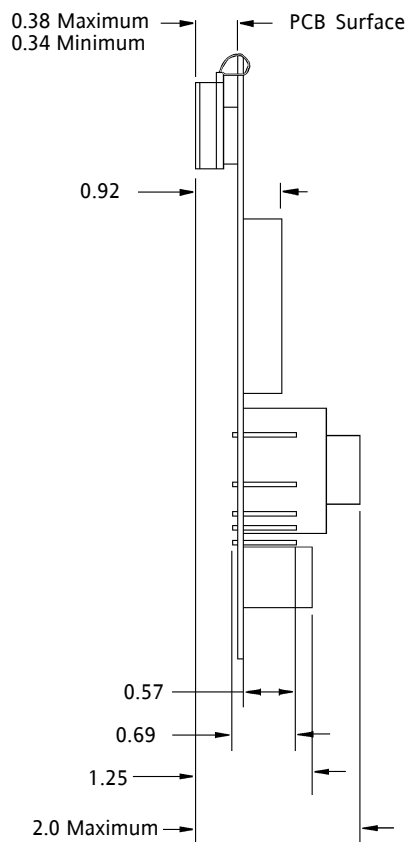
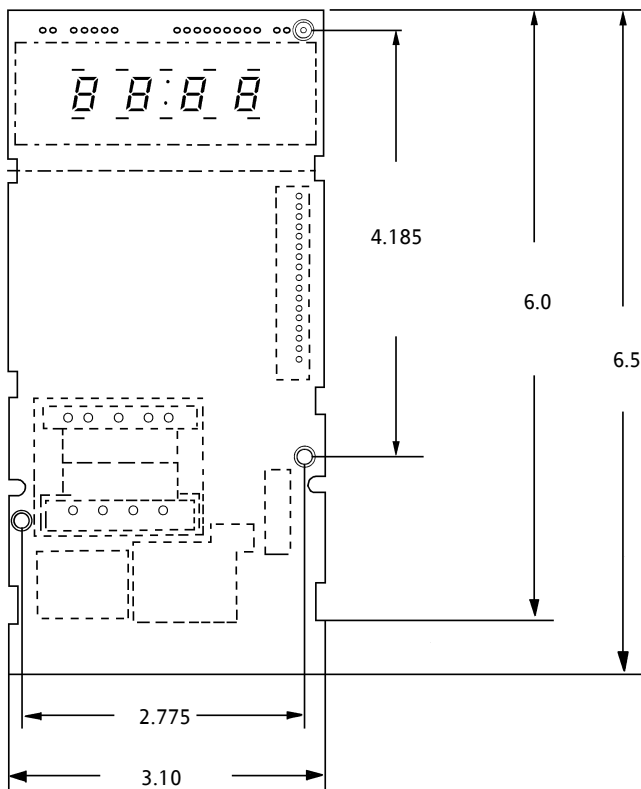
### Options

- Domestic or export choices
- 50 or 60 Hz operation
- 12 or 24 hour clock
- Lbs or kgs input
- Microwave with browner mode
- Interface with full-featured or basic keyboard

## Wiring Diagram



## Typical dimensions for the electric microwave oven control (in inches)



## Specifications

- User interface through customer supplied membrane keypad
- Mag relay fire at  $80^{\circ}\text{F} \pm 18^{\circ}\text{F}$
- Will drive up to 1000 watts magnetron

Information subject to change without notice. 7/99