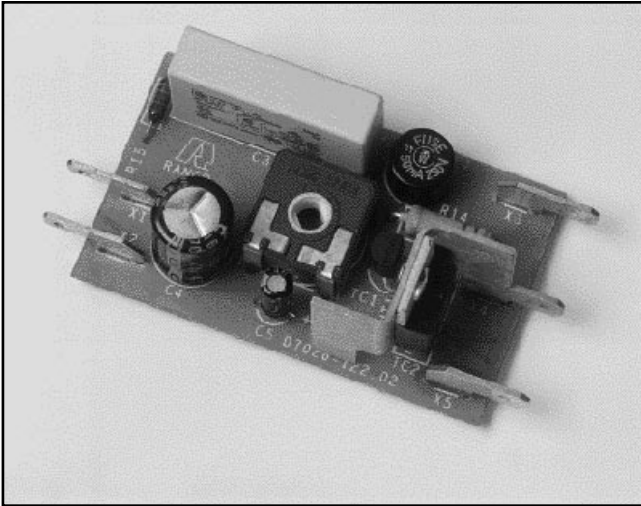




Appliance Controls

E70 Electronic Thermostat for Fridge / Freezer Appliances



Standard Functions

- Temperature control using single temperature sensor
- Rotary temperature adjustment
- Factory adjustable settings to exact customer requirements
- Narrow differentials e.g. 0.3K
- Wide differentials e.g. 10K to 20K
- Automatic defrost via constant cut-in characteristic
- 4.8mm Faston Connectors

Optional

- Suitability for HC appliances in accordance with IEC 60079-15
- Adapter for centre-post mounting
- Manual defrost switch with LED indicator

The E70 electronic module is specifically developed for refrigerators or freezer appliances using a single compressor cooling system.

Its small size allows it to be mounted in thermostat housings designed for centre-post mounted electro-mechanical thermostats. An optional plastic adapter can be supplied to eliminate any tooling changes.

The electronic circuit, when used with the Invensys L66 range of Temperature Sensors, provides excellent accuracy and repeatability independent of atmospheric pressure. A wide choice of setting envelopes is possible offering narrow differential, wide differential or constant cut-in characteristics with an option for manual defrost selection.

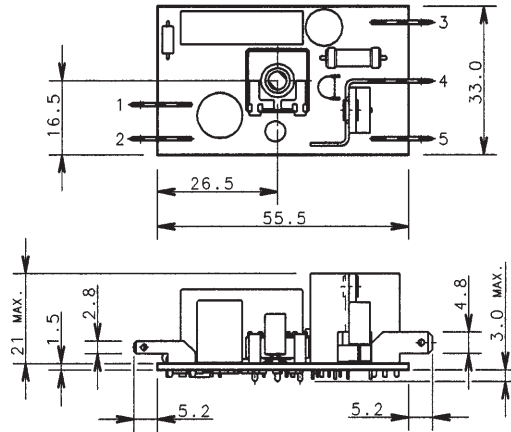
Design Features

- Surface mounted technology reduces size simplifying use in existing appliances
- All solid-state design improves reliability and allows use in systems with Hydrocarbon based refrigerants
- Electronic design eliminates influence of barometric pressure on accuracy and repeatability
- Electronic design allows complete flexibility for customer choice settings
- Designed for use with Invensys L66 Temperature sensors
- Designed to comply with EN 60335, EN 60730 and the European EMC and Low Voltage Directives

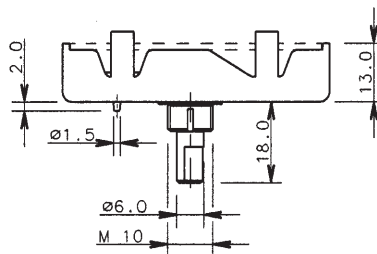
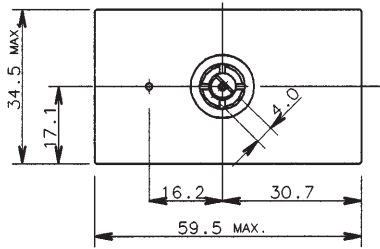
Specifications

- Supply Voltage :230Vac ^{+10%}_{-15%} at 50Hz
- Self Consumption :<0.2W
- Operating temperature :-10°C to +40°C
- Storage temperature :-30°C to +60°C
- Compressor :10A in-rush (14s max)
- (PTC or Start Relay) :1.5A nominal (pf>0.4)
- Settings :factory programmable

PCB DIMENSIONS



OPTIONAL ADAPTER



DIMENSIONS IN mm

WIRING DIAGRAM

