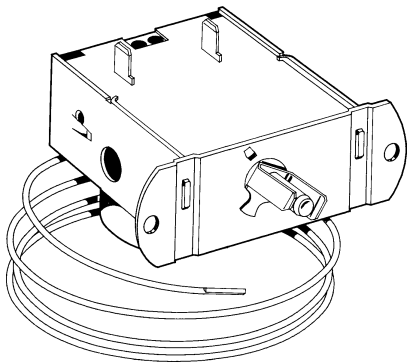
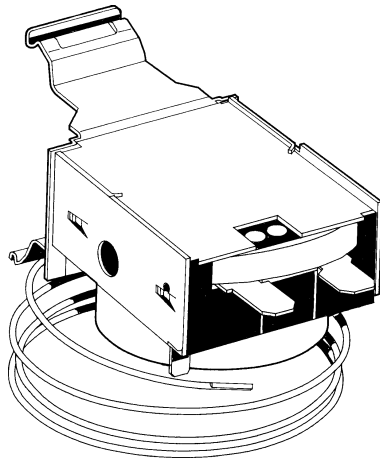


## Cold Controls



**Cover Terminals**



**Rear Terminals**

There are two basic types of Invensys Cold Control designs, constant differential and constant cut-in.

The constant differential controls were designed for use in household refrigerators and freezers. Their compact size also makes them useful in water coolers, beverage dispensers, display cases and air conditioning units. They are also called “straight range” controls because they have a fixed differential. The established differential remains constant regardless of external adjustment by the consumer. The majority of Invensys’ cold controls are of this type.

The constant cut-in type controls were designed for frost-free refrigerators, but they too can be used in self-contained units such as beverage coolers and display cases. This type of control offers an adjustable differential. In this case, the external adjustment provided for the consumers’ use changes the temperature. Rotating the dial indicator to the colder position changes the cut-out temperature only and widens the differential.

In both designs the contacts close on an increase in temperature. On all controls, the gas within the capillary tube reacts to temperature changes and actuates the power element diaphragm to trip the toggle mechanism.

All Invensys Cold Controls have a positive stability for long electric and mechanical life. They are UL/CSA listed.

<b>Cold Control Model Descriptions</b>		
9530	Fixed Differential	SPST
9531	Constant Cut-In	SPST
9533	<b>Automotive</b> Fixed Differential	SPST
9535	Fixed Differential with Auxiliary Circuit	SPST
9537	<b>Automotive</b> Fixed Differential with Auxiliary Circuit	SPST
9539	Fixed Differential	SPDT
9540	High Rated Fixed Differential	SPST
9551	Reverse Logic Fixed Differential (Contacts open on temperature rise)	SPST
9551V	Vacuum Switch	SPST

## Typical Specifications

Accessories: Knobs, dial plates, spiral bulb, hairpin bend, tape marks, capillary forms

Adjustment

Options: 2 prong or 3 prong coupling, custom shaft, flat position and length, screwdriver slot, center post, lever type

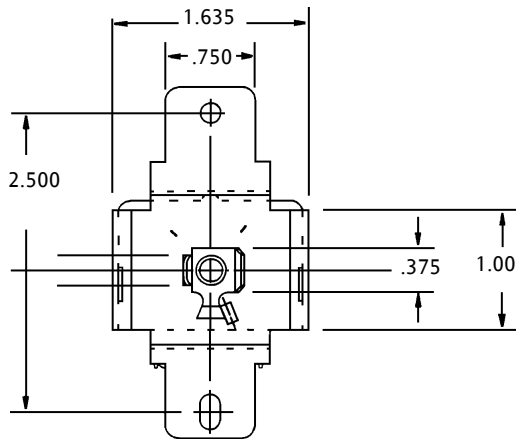
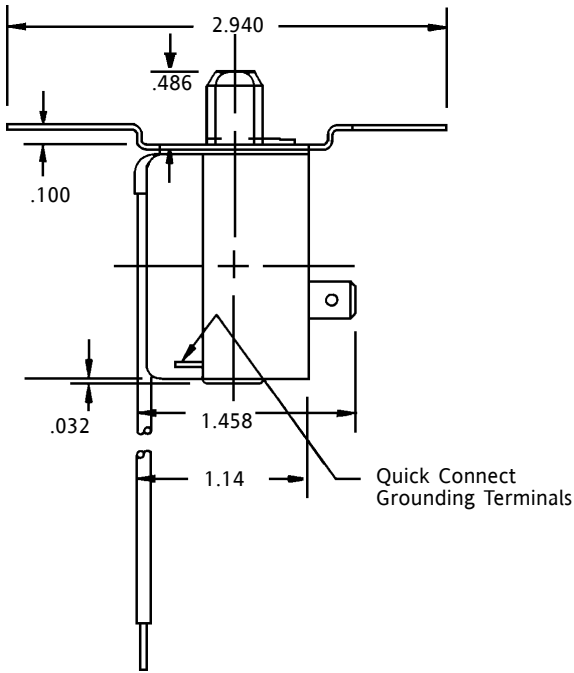
Approvals: UL SA643, CSA LR45282, VDE available upon request

Dial: 180, 270, and 315 degree rotation typical

Electrical: 125 VAC - 16 A F.L. 80 A L.R.  
250 VAC - 8 A F.L. 40 A L.R.

Mounting: NEMA 8-32 or 6-32 threads on 1.312", 2.187" or 3" hole centers or shaft/bushing panel nut mount

Termination: 1/4" male quick connect or 6-32 threaded terminals  
Optional through the cover terminal location



## Features

- 6" to 9" capillary
- Individual adjustment for both cut-in and cut-out settings
- Withstands vibration
- No setting drift
- Accurate factory calibration

## Options

- With or without OFF switch
- Coiled Bulb
- Wide selection of temperature range and differential
- Variety of mounting brackets and configurations

